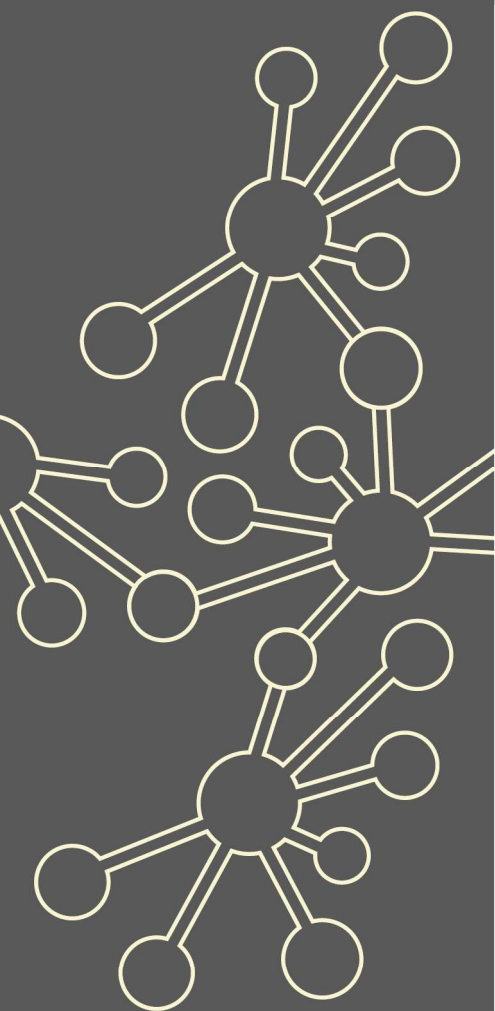


Secondary Teaching for Mastery – Embedding Year Support

Maths Hubs Network Collaborative Projects 2021/22

NCP21-13



Outline

Secondary Teaching for Mastery Embedding Year Support is available for those departments who participated in the previous year's Secondary Teaching for Mastery Development Work Group, and who are beginning to embed their work on teaching for mastery. Mastery Advocates (designated previously in the Development Work Group) will work closely with an assigned Mastery Specialist to help them embed teaching for mastery approaches across the whole department.

The focus will be on constructing or refining a coherent development plan and supporting and leading the whole department in realising the aims of that development plan. The school will also be part of a Secondary Teaching for Mastery Embedding and Sustaining Work Group with other schools.

Details

What is involved?

This is a bespoke programme of support with the key aim of working with the Advocates to support them in drawing up a coherent and long-term departmental action plan targeted on the needs of students and teachers, and to work together in enacting the elements of the plan.

There will be three days of support for each school. These could include:

- Mastery Specialists supporting the Advocates to draw up and/or refine a departmental action which is based on the needs of teachers and students
- Mastery Specialists supporting the Advocates to enable them to run professional development sessions for their departmental colleagues related to aspects of the development plan
- joint planning of individual lessons, sequences of lessons or longer units of work
- Mastery Specialists helping Advocates to support other departmental members as appropriate

Mastery Specialists working alongside Advocates to develop schemes of work and other departmental systems and structures to allow for a full teaching for mastery approach.

Who can take part?

Participation in the Work Groups is for maths departments in schools that have participated in a Secondary Teaching for Mastery Development Work Group in 2020/21. Lead participants will ideally be the Mastery Advocates who participated in 2020/21 Secondary Teaching for Mastery Development Work Groups.

What are the benefits?

Participants and their schools will:

- ✓ cultivate a deep understanding of the principles and pedagogies of mastery
- ✓ understand the leadership and management skills required to promote and develop a teaching for mastery approach
- ✓ understand how to develop a coherent and connected curriculum which promotes teaching for mastery
- ✓ produce a development plan and professional development programme for the department
- ✓ develop support for the department through CPD and collaborative working practices.

What is the cost?

The Secondary Teaching for Mastery – Embedding Year Support project is fully funded by the Maths Hubs Programme so is free to participating schools.

Covid-19 Recovery

Many positive lessons were learnt from online collaboration during Maths Hubs activity in 2020/21. These will be built upon in 2021/22.

As the impact of the pandemic hopefully recedes, the result for Maths Hubs work will be a blend of face-to-face activities and frequent online collaboration.



The wider context

This Work Group forms part of an overall Teaching for Mastery Programme designed to develop secondary maths departments that are well-led, high-performing and provide high quality professional development through collaborative working. A key part of the Secondary Strategic Goal is to support teachers and leaders in secondary schools to establish teaching for mastery approaches. The national target is for half of the secondary schools in England to engage with teaching for mastery. This enhanced support forms part of the national strategy to achieve this. To meet this target it is vital not only that individual teachers develop teaching for mastery approaches, but also that the department as a whole has systems, policies and ways of working which are compatible with teaching for mastery and allow for the collaborative professional development structures which are needed in order to develop and embed these approaches and to sustain them in the long term. The focus of this enhanced support is to build initial developments into a coherent and long-term departmental plan targeted on the needs of students and teachers.

Expectations of participants and their schools

Schools must be able to commit to the full academic year's programme. This involves three days of face-to-face support across the academic year, as well as classroom and school-based activity. Schools at this stage of the Teaching for Mastery Programme who are eligible for bespoke specialist support must also join the Embedding and Sustaining Work Group (NCP21-14).

About the Hub

What is a Work Group?

Work Groups comprise of a group of schools who work on something together over the course of an academic year. Participating teachers will be guided by an experienced Work Group Lead, and will engage in intersessional tasks, trying things out in their classrooms, and feeding back to the group.

More information about the hub

Work Groups comprise of a group of schools who work on something together over the course of an academic year. Participating teachers will be guided by an experienced Work Group Lead, and will engage in intersessional tasks, trying things out in their classrooms, and feeding back to the group.

Work Group Lead information

Mastery Advocates will be supported by an experienced Secondary Teaching for Mastery Specialist

If you have any queries contact enquiries@ememathshub.org

