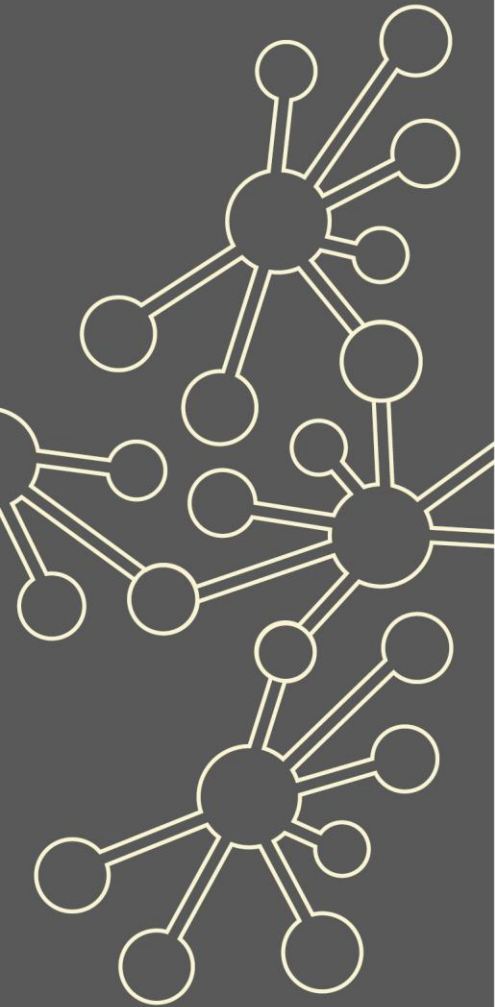


Primary Teaching for Mastery – Sustaining

Maths Hubs Network Collaborative Projects 2021/22

NCP21-11



Outline

This project brings together primary schools to sustain their teaching for mastery approach for mathematics. It seeks to establish continuing support for collaborative planning and specialist subject knowledge development in primary schools and leadership within the school. It is for schools who have been involved in either a Development Work Group or an Embedding Work Group.

Schools that have engaged in Sustaining Work Groups in 2020/21 will continue to work within these professional communities in 2021/22 and beyond.

Details

What is involved?

The Work Group combines six workshop sessions spread out over the year, led by the Work Group Lead (a Mastery Specialist). School-based work is led by the lead participants in their own schools.

The workshops are likely to be hosted in different schools during the year with the first workshop being held in the Mastery Specialist's school.

Who can take part?

The schools will have previously participated in a Development Work Group and might have received support for embedding teaching for mastery. A key characteristic of all the schools is strong commitment from both school and subject leadership for sustaining teaching for mastery approaches, and for most teachers to have already started using teaching for mastery approaches.

Each school will have a lead participant in the Work Group, normally the subject leader for maths responsible for leading and sustaining developments in maths. They are likely to have played a lead role in previous years. At different points in the year other teachers will participate in aspects of the Work Group workshops, either when hosting a TRG session or participating in a collaborative planning session.

What are the benefits?

Participants and their schools will:

- ✓ enhance their mathematical subject knowledge, emphasising key areas of maths
- ✓ learn how to establish an effective collaborative planning culture
- ✓ plan, teach and reflect collaboratively to provide a coherent mastery curriculum
- ✓ continue to refine school structures and systems to embed and sustain mastery
- ✓ continue to ensure a sustainable model for collaborative planning and ongoing specialist subject knowledge development for all teachers.

What is the cost?

The Primary Teaching for Mastery – Sustaining project is fully funded by the Maths Hubs Programme so is free to participating schools.

Covid-19 Recovery

Many positive lessons were learnt from online collaboration during Maths Hubs activity in 2020/21. These will be built upon in 2021/22.

As the impact of the pandemic hopefully recedes, the result for Maths Hubs work will be a blend of face-to-face activities and frequent online collaboration.



The wider context

The strategic goal of the programme for primary schools is to establish teaching for mastery approaches so that all pupils develop deep knowledge, understanding and confidence. Primary schools working on establishing teaching for mastery are first supported in a development Work Group and then in an embedding Work Group (and, in some cases, initially a Mastery Readiness Work Group). These Sustaining Work Groups are being seen as a permanent form of support for maths in primary schools where, through collaborative practices, schools can focus on the continued improvement, consistency and refinement of a teaching for mastery approach.

The teachers and leaders will strive to ensure that all teachers can be supported to sustain teaching for mastery across school, looking particularly in the areas of collaborative planning and specialist subject knowledge development.

Expectations of participants and their schools

Schools must be able to commit to the full academic year's programme. This involves six workshops across the academic year, as well as classroom and school-based activity.

About the Hub

What is a Work Group?

Work Groups comprise of a group of schools who work on something together over the course of an academic year. Participating teachers will be guided by an experienced Work Group Lead, and will engage in intersessional tasks, trying things out in their classrooms, and feeding back to the group.

More information about the hub

At East Midlands East we are committed to supporting colleagues to become outstanding practitioners – learning from the best of local, national and international practice. We will work with colleagues to provide opportunities to engage with research, develop new practices and to share that development to make a positive impact on learners.

Work Group locations/dates

This will vary dependent on the Primary Mastery Specialist running the Work Group and will be confirmed later.

Work Group Lead information

These Work Groups will be run by an experience Teaching for Mastery Specialist.

To register an interest in the programme please follow the link below:

[Expression of Interest Form](#)

If you have any queries contact enquiries@ememathshub.org

