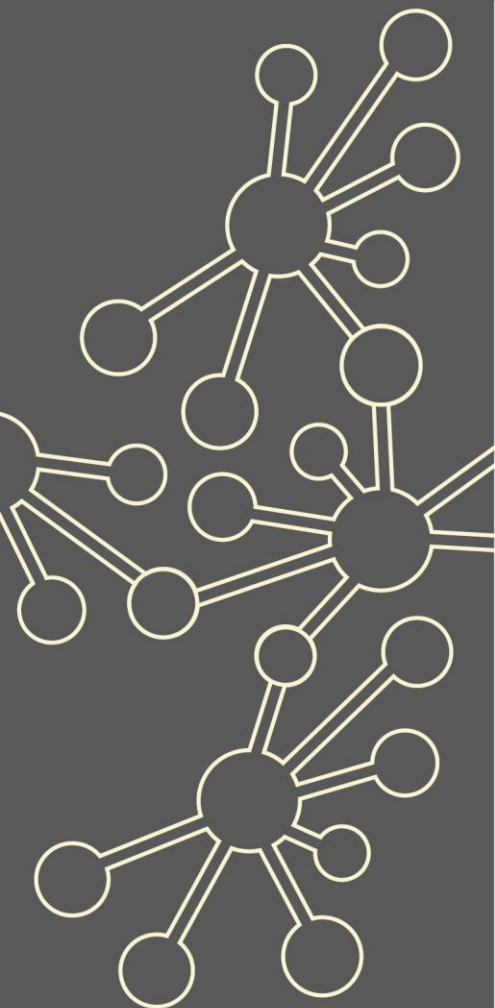


PD Lead Development and Accreditation Programme

Maths Hubs Network
Collaborative Projects
2021/22

NCP21-04



Outline

The NCETM Professional Development Lead Accreditation Programme is designed for those who lead professional development for teachers of maths.

Participants undertake to plan, lead and evaluate a professional development programme for a group of teachers during the course of the programme, and to record their planning, evaluation and reflection. Successful completion of the programme and satisfactory completion of all tasks and related paperwork will result in the participant being designated an NCETM Accredited PD Lead.

Details

What is involved?

The programme involves:

- the equivalent to three face-to-face days over the course of the year, supporting institution-based work and individual study undertaken in between these sessions
- completion of an Accreditation Evidence Document (AED, which facilitates critical reflection on your learning and the PD you design, deliver and evaluate over the year)
- designing, leading, reviewing and refining a programme of support for maths teacher professional development, drawing upon a range of evidence-informed models and activity.

Beyond the core programme, participants will have the opportunity to pay to work with the University of Chester and gain an academic award (PG Cert) for completing an enhanced version of the programme.

Who can take part?

This programme is for teachers of maths (all phases from Early Years to post-16) who have existing commitments and responsibility for designing, leading and evaluating maths teacher professional development, and the potential to develop further.

What are the benefits?

Participants will:

- ✓ develop knowledge of models of CPD for maths teachers
- ✓ consider the themes and issues in teaching maths, and the implications of these in supporting other teachers
- ✓ design a professional development programme, deliver it, and evaluate it
- ✓ develop relationships with senior leaders to support a sustainable culture of maths CPD
- ✓ increase their own subject knowledge and professional practice.

What is the cost?

The PD Lead Development and Accreditation Programme is fully funded by the Maths Hubs Programme so is free to participating schools.

Covid-19 Recovery

Many positive lessons were learnt from online collaboration during Maths Hubs activity in 2020/21. These will be built upon in 2021/22.

As the impact of the pandemic hopefully recedes, the result for Maths Hubs work will be a blend of face-to-face activities and frequent online collaboration.



The wider context

One of the aims of the NCETM and the Maths Hubs Network is to provide opportunities for all practitioners of maths to benefit from high quality collaborative professional development. This requires that there are enough people with the skills and capacity to lead, facilitate and support the professional development of others, both within and across settings.

In order to carry out their work, Maths Hubs identify, develop and support local leaders of maths education (LLME). The LLME work together as part of their Maths Hub team to support schools and colleges across their Maths Hub area. The NCETM Professional Development Lead Development and Accreditation Programme is designed specifically to address this need.

Expectations of participants and their schools

This programme is offered for prospective PD Leads in the Early Years, primary, secondary and post-16 (A level and Core Maths) phases. Those who participate must be teachers of maths who have existing commitments and responsibility for designing, leading and evaluating maths teacher professional development. They must also have the potential to further develop their skills and capacity to lead, facilitate and support the mathematical professional development of others both within and across schools. The programme is an integral part of the second year of training for Primary and Secondary Mastery Specialists. Participants must be supported by their schools to be released for any face-to-face and online workshops.

About the Hub

More information about East Midlands East Maths Hub

At East Midlands East we are committed to supporting colleagues to become outstanding practitioners – learning from the best of local, national and international practice. We will work with colleagues to provide opportunities to engage with research, develop new practices and to share that development to make a positive impact on learners.

Work Group locations/dates

Dates and venue to be confirmed

Residential training (Pandemic Dependent) – Dates to be Confirmed

- Sept/Oct 2021
- Jan/Feb 2022
- June 2022

Work Group Lead information

This programme will be run by an experienced Cohort Lead who will also offer support and guidance for the completion of the AED.

Deadlines

This deadline for applications is **Friday 28th May 2021**

To apply and for more information click [here](#)

If you have any queries contact enquiries@ememathshub.org

